

Scandihealth

NOTUS Suite is a comprehensive product range for the primary healthcare sector, performing a wide variety of tasks.

NOTUS SUITE

EXCELLENCE AT WORK

NOTUS SUITE

NOTUS Suite is a comprehensive product range for the primary healthcare sector, performing a wide variety of tasks.

NOTUS Suite supports cooperation between providers, regions, municipalities, and citizens.

NOTUS Suite contributes to the realisation of the coherent healthcare community.

NOTUS Suite has been developed over several years in close cooperation with the Danish regions, municipalities and central authorities.

NOTUS Suite utilises the health professional knowledge and skills that CSC Scandihealth has achieved as a provider of healthcare IT and healthcare IT services for the last three decades.

FULLY INTEGRATED

The NOTUS Suite products are fully integrated with each other.

Information that the user has registered one place in NOTUS Suite will immediately be available to another user in another part of the solution.

If a region changes, for example, the status of intake of new patients for a practice, the new status will immediately be visible in NOTUS Local, NOTUS eCitizen, NOTUS eProvider and - via NOTUS Services - in the directory at the health portal, sundhed.dk.

UP-TO-DATE TECHNOLOGY

NOTUS Suite is a technologically up-to-date and user-friendly solution.

NOTUS Suite uses the latest web tools and the best software components in the market.

NOTUS REGIONAL

NOTUS Regional helps regions perform the tasks related to the reimbursement of providers and pharmacies for the services provided to the citizens.

NOTUS Regional helps regions plan and manage the service level that the primary care providers must deliver to the citizens.

Thanks to NOTUS Regional, the regions are among other things able to:

- Report and maintain provider information
- Order lists of registered patients
- View information about the citizens registered with the individual provider
- Receive and download data from the country's providers and pharmacies
- Validate, check, approve or return data
- Effect payment to the provider and the pharmacy via Nemkonto Easy Account. This takes place in accordance with the approved data which is subsequently transferred electronically to the region's financial management system
- Carry out interregional clearing based on the clients' registered address
- Prepare payments, continuously assess pending payments and follow up on payments already made
- Calculate capitation fees based on intake of new patients, number of patients leaving the practice, etc.

NOTUS EPROVIDER

NOTUS eProvider bridges communication between regions and providers.

NOTUS eProvider constitutes the providers' electronic access to fee and reimbursement specifications, e-stats and information about the citizens.

NOTUS eProvider forms the basis for the directory facilities at the Danish health portal, sundhed.dk, and thus for the citizen's choice of doctor and provider.

NOTUS eProvider enables providers to:

- download currently updated patient list to own practice system - via eStatements
- get access to an electronic version of lists, specifications and statistics - via eFiles
- enter data for the regions and upload the data electronically - via eAccounting
- update basic and collectively agreed information about own practice - via eDeclarations

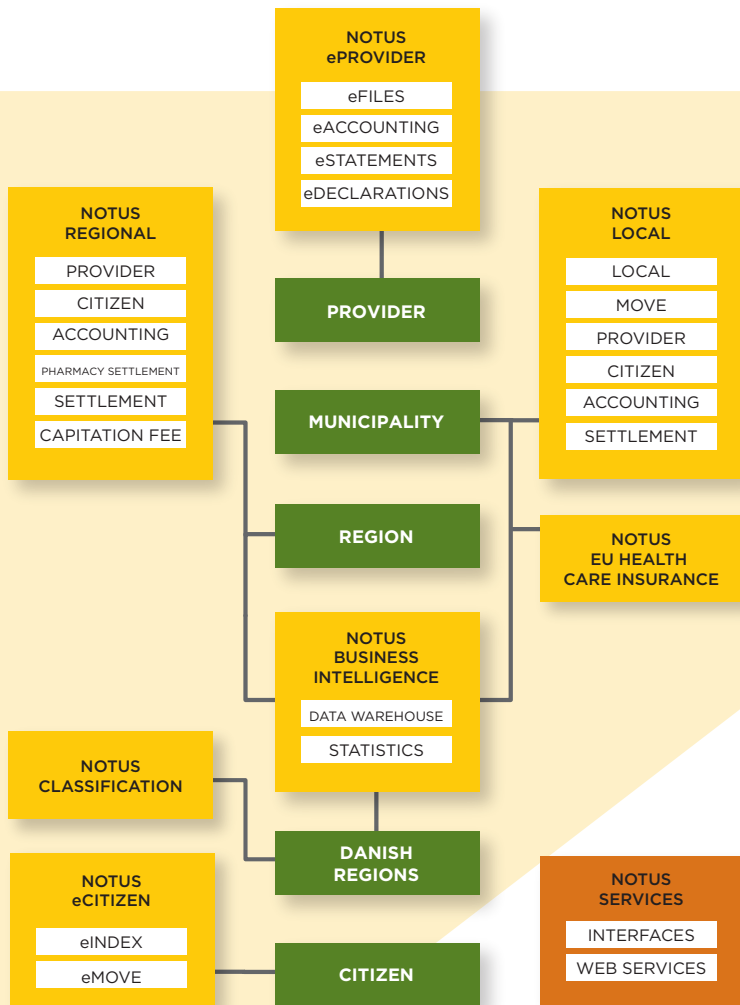
NOTUS LOCAL

NOTUS Local bridges communication between providers and citizens.

NOTUS Local provides the case officer in, for example, the municipality's public service unit with an overview of the information about the citizen and his family. For example, information about registration with general practitioner, address information and various status information, history and case log.

With NOTUS Local the municipalities throughout the country handle tasks like:

- change of doctor, including handing over of medical record
- change of insurance group
- ordering of health cards for individual citizens or for several citizens at a time
- issue of temporary health cards
- tourist health insurance
- print of list of doctors accepting new patients
- issue of EU health card
- overview of the municipality's costs of free physiotherapy and therapeutic riding



NOTUS Suite: Products, modules and basic functions

NOTUS CLASSIFICATION

NOTUS Classification is used for updating various reimbursement information – charges, rates, breakpoints, and key figures – in the various collective agreements.

The product has been customised to the individual collective agreements so that known concepts and models are incorporated in the system.

You can start working with copies of the collective agreements. Then check your corrections before they are authorised and prepared for use in various reimbursement systems.

NOTUS SERVICES

NOTUS Suite is designed with a service-oriented architecture – SOA.

In terms of the users, this means more seamless combination of data across the NOTUS Suite modules than ever before. In addition, the customer's own solutions can make synchronous queries directly on 100% real time production data. Thus it is no longer necessary to create copies of the databases at the customer.

There are more than 15 standard interfaces and web services. They are used by a wide range of different stakeholders such as central authorities and agencies, regions and municipalities, as well as a number of the suppliers that offer solutions for regions and municipalities.

NOTUS BUSINESS INTELLIGENCE

NOTUS Business Intelligence enables staff at central authorities, associations, regions, and municipalities to view, use, generate and extract lists and statistics. NOTUS Business Intelligence always contains at least five years' of data that is available to relevant authorities for statistical processing and follow-up. Data consists of information about citizens and the services and medicine they have received and the doctors they have received it from.

The information is among other things used as a basis for the control reports which the providers receive in accordance with the collective agreements. The control reports show a number of defined check points related to regional and national figures.

NOTUS ECITIZEN

NOTUS eCitizen is an integral part of the municipal, digital public service solution and citizen's portal at www.borger.dk.

Using NOTUS eCitizen citizens are among other things able to:

- change GP
- change insurance group
- order and, if required, pay for a new health card
- order an EU health insurance card

NOTUS eCitizen uses the latest graphical components which among other things enable the citizen to choose his GP via graphical maps.

As something quite unique, the eMove module links the above-mentioned eCitizen options with the population register. In that way the citizen can, via his digital signature, register change of address for the entire or part of the household, change GP, etc. eMove is integrated with several of the municipality's other registers.

The eIndex module provides citizens with information about previous visits to and services received from primary sector providers. Presentation of information is clear and easy to understand. For example, the citizen will be able to see the date of his last visit to the dentist, and when he last had his blood pressure measured at his own GP.

NOTUS EU HEALTH INSURANCE

NOTUS EU Health Insurance is used by the staff in the municipalities for ordering the EU health insurance card. ■



NOTUS SUITE

CONTACT CSC SCANDIHEALTH

Please contact CSC Scandihealth on tel +45 3614 4000 or by e-mail at scandihealth@csc.com for more information. You can also contact our key account manager, John Talchow, direct on tel +45 3614 7298, e-mail jtalchow@csc.com.

CSC Scandihealth A/S

Main office
P.O. Pedersens Vej 2
8200 Århus N
Denmark
Tel (45) 3614 4000
Fax (45) 3614 7324

Oldenburg Allé 1
2630 Taastrup
Denmark
Tel (45) 3614 4000
Fax (45) 3614 7370

Vers. 19.01.2009

CSC Scandihealth A/S

CSC Scandihealth develops and supplies electronic health records and solutions for hospital information, clinical quality, care, health insurance, and student administration. We put our health professional knowledge and competence to work in support of the development of an integrated healthcare community.

We have supplied healthcare IT to Danish hospitals since 1972. We have created an unrivalled product range, a unique pool of know-how about the healthcare sector, and in-depth knowledge of the world of our customers.

Our employees are primarily working with the development and supply of healthcare IT. The knowledge and expertise of our employees encompass technology as well as healthcare, a combination that provides us with a sound basis for further development and delivery of healthcare IT solutions that allow our customers more time to concentrate on their own core services.

CSC Scandihealth is owned by CSC and is CSC's Nordic competence centre for healthcare solutions.

