



TECHNICAL FACTS ABOUT CLINICAL SUITE OVERVIEW, CONTINUITY - SIMPLE WORKFLOWS



Clinical Suite offers great possibilities for standards-based integration with the hospital's other solutions and thus optimised utilisation of existing stand-alone IT systems.

Clinical Suite is based on the following open technical and healthcare professional standards; some of the most important include HL7, Oracle HTB, CCOW, J2EE and BPEL.

TECHNICAL SPECIFICATIONS

INTEGRATION

- Multiple integration facilities, including
 - Visual integration (CCOW and single sign-on)
 - Service integration (WS* and Java services)
 - Process integration (BPEL)
 - Message integration (HL7 versions 3 and 2.x)

SCALABILITY

- Stateless services with linear horizontal scalability
- Modular architecture

PERFORMANCE

- Advanced multi-level caching of semi-static data
- Continuous monitoring of response times and resource consumption
- Operational stability
- Use of Oracle High Availability features on application servers and database

SECURITY

- Multi-level security model that supports national and international personal data security requirements
- Automatic audit logging and online access to all patient-related events

LEGAL RECORD

- Full traceability of all transactions

ENTERPRISE INFORMATION REPOSITORY

- Oracle Healthcare Transaction Base HL7 version 3

ENTERPRISE TERMINOLOGY ENGINE

- Supports local, national, and international coding schemes

SERVERS

- Standard servers with Dual or QUAD core processor from Intel or AMD

OPERATING SYSTEMS

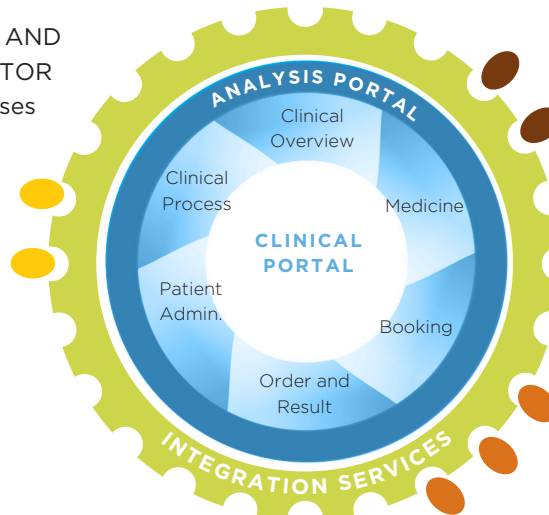
- RedHat Linux
- Alternative: Server from SUN with Solaris operating system

OPTIONS

- Real Application Cluster
- Diagnostic Pack
- Configuration Management Pack
- Oracle Tuning Pack
- Load Balancing Switch

HEALTH AUTHORITIES AND PRIMARY HEALTH SECTOR

- National health databases
- Reporting
- Care solutions
- Referrals



FINANCES AND RESOURCES

- Rota
- Logistics
- Pharmacy
- Procurement
- Payment

CLINICAL SERVICE SYSTEMS

- Laboratory
- X-ray
- Microbiology
- Pathology

About

CSC Scandihealth A/S

CSC Scandihealth A/S develops and supplies electronic health records and solutions for hospital information, clinical quality, care, health insurance, and student administration.

We put our health professional knowledge and competence to work in support of the development of an integrated healthcare community.

We have supplied healthcare IT to Danish hospitals since 1972. We have created an unrivalled product range, a unique pool of know-how about the healthcare sector, and in-depth knowledge of the world of our customers.

Our employees are primarily working with the development and supply of healthcare IT. The knowledge and expertise of our employees encompass technology as well as healthcare, a combination that provides us with a sound basis for further development and delivery of healthcare IT solutions that allow our customers more time to concentrate on their own core services. CSC Scandihealth is owned by CSC and is CSC's Nordic competence centre for healthcare solutions.

CSC Scandihealth A/S

P.O. Pedersens Vej 2
8200 Århus N
Denmark
Fax +45 3614 7324