



CSC

FOR THE HOSPITAL
IT PROFESSIONAL

CLINICAL SUITE

OVERVIEW, CONTINUITY - SIMPLE WORKFLOWS



A SINGLE POINT OF ACCESS TO MULTIPLE SYSTEMS

RUNNING A MODERN HOSPITAL HINGES ON THE USE OF EFFICIENT IT SYSTEMS. AS AN IT PROFESSIONAL YOU MUST HELP TO ENSURE THAT THE IT SYSTEMS AT YOUR HOSPITAL SUPPORT AND OPTIMISE MANAGERIAL AS WELL AS CLINICAL WORK.

The electronic patient record, Clinical Suite, offers the hospital single and structured access to data which is currently stored in various individual systems – across professional groups, departments, specialties and organisation. This enables optimised use of existing stand-alone IT systems and the varied types of data that is derived from them.

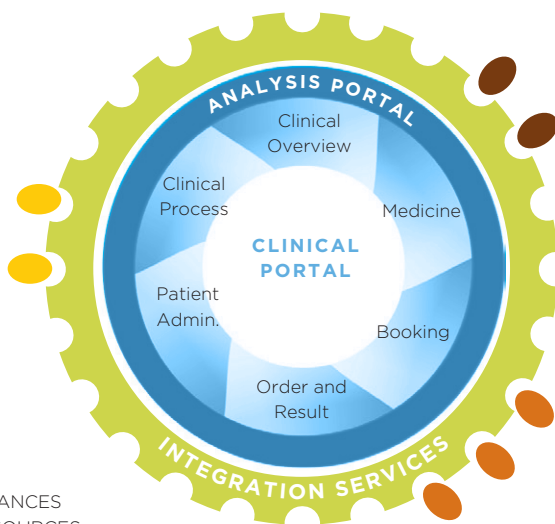
Clinical Suite collects, organises and activates the hospital's total clinical know-how and best practices. Management is presented with aggregate and structured data for managing and running the hospital, and the clinical staff gets consistent and structured access to patient data. This optimises hospital operations as well as patient treatment.

Clinical Suite offers great opportunities for standards-based integration with the hospital's other solutions. Thus standards-based integration with laboratory systems, x-ray systems and patient administrative systems is feasible. Integration with national health databases, municipal care systems and many others is also possible. Clinical Suite's integration facilities include visual integration, service integration, process integration and message integration.

The hospital can – without programming and without any costs of development – tailor templates, workflows and overviews to suit the needs of the organisation. For example, the hospital can customise the record structure, clinical overviews, note templates and coherent work situations.

Clinical Suite builds on an open modular architecture based on cutting-edge open technological and health professional standards; some of the most important include HL7, CCOW, J2EE and BPEL as well as Oracle's standard tool, the HTB (Healthcare Transaction Base). The HTB platform ensures that all data is stored as normalised data and in compliance with the HL7 standard in a clinical database. An Enterprise Terminology Engine supports local, national, and international classifications.

SCALABLE AND INTEGRATED OPEN STANDARD ARCHITECTURE USER-FRIENDLY AND INTUITIVE



- FINANCES
- RESOURCES
- CLINICAL SERVICE SYSTEMS
- HEALTH AUTHORITIES
- PRIMARY HEALTH SECTOR

The entire solution is developed by clinicians and IT professionals working together, and this very combination of IT know-how and health professional knowledge is what makes the design and functionality of Clinical Suite so unique.

The phased implementation process will incorporate the hospital's needs, requirements and experiences, and include performance management in close collaboration with hospital management, clinical staff and IT managers. All experiences and proven enhancements will be integrated during implementation on an ongoing basis.

Clinical Suite offers you a flexible and future-proof solution which provides you with overview, insight and continuity – all in one place.

WHAT IS **CLINICAL SUITE?**

Clinical Suite is an electronic patient record which covers the entire hospital across professional groups, departments, specialties and organisation. The solution comprises an integration platform, an international domain model and modular EPR functionality. Clinical Suite is designed for further development and is continuously being expanded with new modules that optimise your return on investments.

The flexibility of the solution enables the hospital to modify and customise central elements such as record structure, organisational structure, overviews and standard clinical pathways so as to support the special needs for the content and structure of activities and documentation.



BUSINESS SOLUTIONS
TECHNOLOGY
OUTSOURCING

CSC Scandihealth A/S

P.O. Pedersens Vej 2
8200 Århus N
Denmark
Fax +45 3614 7324

For further information about
Clinical Suite please contact:
Anne-Mette Oudrup
E-mail: aoudrup@csc.com
Tel: +45 2923 7220

About CSC Scandihealth A/S

CSC Scandihealth A/S develops and supplies electronic health records and solutions for hospital information, clinical quality, care, health insurance, and student administration. We put our health professional knowledge and competence to work in support of the development of an integrated healthcare community.

We have supplied healthcare IT to Danish hospitals since 1972. We have created an unrivalled product range, a unique pool of know-how about the healthcare sector, and in-depth knowledge of the world of our customers.

Our employees are primarily working with the development and supply of healthcare IT. The knowledge and expertise of our employees encompass technology as well as healthcare, a combination that provides us with a sound basis for further development and delivery of healthcare IT solutions that allow our customers more time to concentrate on their own core services. CSC Scandihealth is owned by CSC and is CSC's Nordic competence centre for healthcare solutions.

Copyright © 2009 Computer Sciences Corporation. All rights reserved.

